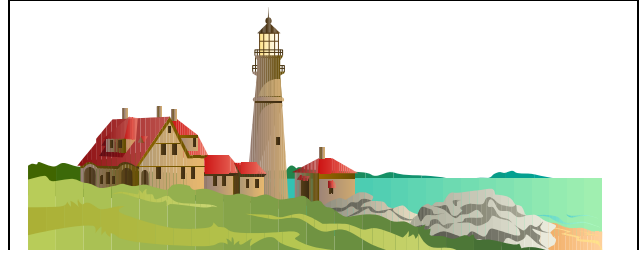


ISLIP PUBLIC SCHOOLS

PERSONNEL
BULLETIN



PLEASE POST

PLEASE POST

May 22, 2013

X-SCHEDULE*

The following extra-curricular athletic positions are tentatively anticipated for the 2013-14 school year. All interested candidates for x-schedule vacancies must apply in writing to their respective principals. All applications must be submitted by 4:00 pm Wednesday, June 5, 2013.

District:

EXCEL

High School:

- 9th Grade Advisor
- 10th Grade Advisor
- 11th Grade Advisor
- 12th Grade Advisor
- Art Club
- Athletes Helping Athletes
- Buccaneer Club
- Chess Club (1/2 year)
- Competition Club
- Foreign Language Honor Society
- GSA (1/2 year)
- Habitat for Humanity
- History Club
- Interact Club
- Islip Junior Chamber of Commerce (1/2 year)
- KIC Club
- Kickline

- Marching Band Director
- Marching Band Assistant Director
- Mathletes – Sr. High
- Mathletes – Grade 9
- Mock Trial Club
- National Honor Society
- SADD
- Science Olympiads
- Select Choir
- Stage Band (Jazz)
- STAR
- STEP (1/2 year)
- Student Council
- Theater Arts
- Tri-M Music Honor Society (1/2 year)
- Yearbook
- Yearbook Business Advisor

X-SCHEDULE - CONTINUED

Musical Production Team:

**Art Director
Choreographer
Director (60%)
Pit Director
Producer (40%)
Stage Crew Advisor
Technical Director
Vocal Director**

Middle School:

**Art Club
Board Game Club
Broadcast/Journalism Club
Builders Club
Computer Club
Drama Club
Intramurals (Boys) Advisor
Intramurals (Girls) Advisor
ITV Media Club
Keep Islip Clean
Math Olympiads – Grade 6
Mathletes – Grade 7
Mathletes – Grade 8
National Junior Honor Society
Renaissance Club
Stage Band/Jazz Band
Student Council Advisor
Student Council Advisor Assistant
Theater Technology Club
Vocal Groups/Show Choir**

****Subject to X-Schedule Committee approval***

Closing date: June 5, 2013